

### THE SESSION

Cathy Conn & Carol Hartmann, Co-Clerks of Session

2022	2023	2024
Ron Dawson	Cathy Conn	Thomas Douglas
Amy Elder	Kenny Hines	Jennifer Hacker
Carol Hartmann	Matthew Perry	Brad Harville

### THE DEACONS

Cathy Dawson , Moderator of the Deacons

2022	2023	2024
Kay Hardy-Hines	Lois Bringham	Anuji Abraham
Marty Johnson	Cathy Dawson	Deb Kelly
Sandy Koukola	Brittney Maslowski	Brenda Miller

### TRINITY PRESBYTERIAN CHURCH

11:00 a.m. LiveStream

#### MINISTERS

PASTOR  
DIRECTOR OF THE TRINITY CENTER FOR FAITH & ART  
DIRECTOR OF MUSIC MINISTRY  
DIRECTOR OF CHILDREN & YOUTH HANDBELLS  
PIANIST/ORGANIST  
CE COORDINATOR  
CHURCH & FINANCIAL SECRETARY  
CUSTODIAN/MAINTENANCE  
PRESCHOOL DIRECTOR  
FINANCIAL ADMINISTRATOR  
BUILDING CLOSER  
LITURGIST  
GREETERS  
COLLECTION COUNTERS  
TELEPHONE  
ADDRESS  
EMAIL ADDRESS  
WEBSITE

#### The Congregation

Rev. Steven Jewell  
Candy Wheat  
Melissa Weaver  
Doug Harville  
Won Joo Ahn  
Rebecca Perry  
Sherry Pritts  
River City Clean Team  
Elizabeth Bodine

Carol Hartmann

502-245-5515 -- Fax 502-245-5519  
10200 Shelbyville Road, Louisville, KY 40223  
tpclouisville@att.net  
www.tpclouisville.net



*We are a welcoming church family,  
developing disciples who joyfully  
minister to others in the name of Christ.*

*We extend a special welcome to our guests today! We hope you will find comfort  
and meaning in our service as we worship together. After the service, please join us at the  
entrance doors to receive a welcome gift and become better acquainted. Our church family  
appreciates your presence here today, and we look forward to seeing you again soon.*

**March 6, 2022**

*love. grow. serve.*

Worship Service —March 6, 2022

GATHERING TOGETHER

WELCOME AND ANNOUNCEMENTS Carol Hartmann

PRELUDE

INVITATION TO WORSHIP Carol Hartmann  
based on Psalm 46

GATHERING SONG And Can It Be? See Insert

TIME OF CONFESSION

CHILDREN’S MESSAGE Rebecca Perry

SPECIAL MUSIC Lamb of God Twila Paris  
Jeannie Hoover, Flute

GROWING IN THE WORD

SCRIPTURE READING Revelation 18:9–24

SERMON BEHOLD, THE KING IS COMING:  
Lamenting the Loss of Their Idolatrous Love

SONG OF PREPARATION Just as I am, Without One Plea (vv. 1, 3) #370

CELEBRATING THE LORD’S SUPPER

GOING INTO THE WORLD

CLOSING PRAYER & THE LORD’S PRAYER

SENDING BLESSING The Church’s One Foundation (vv. 1, 5) See Insert

Scripture reading for next week:  
BEHOLD, THE KING IS COMING: The Song of Victory  
Revelation 19:1–10

BEHOLD, THE KING IS COMING:  
Lamenting the Loss of Their Idolatrous Love  
Revelation 18:9-24

Drilling Down to Our Deepest Commitment

A Deep Well without a Bucket (Proverbs 20:5; John 4:11)

Myopia of the Moment

The “Clean Breeze of the Centuries”

Acknowledging and Assessing our Deepest Assumptions

- 1. From what source are your deepest needs met?
- 2. By what means does this source satisfy your deepest needs?

Comprehensive Condemnation of Babylon (v. 9–19)

The Sorrow of Kings and Kingdoms - v. 9–10

The Sorrow of Economies and Entrepreneurs - v. 11–17a

The Sorrow of Traders and Travelers - v. 17b–19

Celebrating the Lord’s Victory (v. 20)

The Final Fate of Faithless Babylon (v. 21–24)

There’s Just Something About that Name

Righting Every Wrong

Restoring the Creation’s Goodness

Revealing God’s Great Glory

*If you are interested in providing flowers for worship, please fill in the form on the bulletin board in the hall, or let Sherry in the church office know.*



## ONE GREAT HOUR OF SHARING

You will find One Great Hour of Sharing envelopes in the pews. Also, there are information pamphlets and a “fish” to collect your loose change on the information table in the Narthex.

You may drop your envelopes with your contribution in the offering plate, or simply give it to Sherry with One Great Hour on the memo line.

## Prayer Concerns

Donna Peak and her husband, Jerry Peak (Art Center volunteer); John Hansen (brother in-law of Jim & Elizabeth McDaniel); Phil Strohmeier; Henry Hinson (grandson of TPC preschool teacher, Gail Hinson); Erica Shelley; Andrew Cropper (Cathy & Tom Dawson’s nephew); David Strohmeier (son of Phil & Linda); Carol Redd & Stacy Mills; Imad El-Imam, Judy Davids; David Douglas & Family; Helen (Roger Harvell’s mother) and Roger’s dad, (also Roger Harvell), Kenny Hines, Ghyll Simoneschi, Dennis Dion & family (friend of Jim McDaniel), Toka Moody (friend of Sherry), and peace in the world.

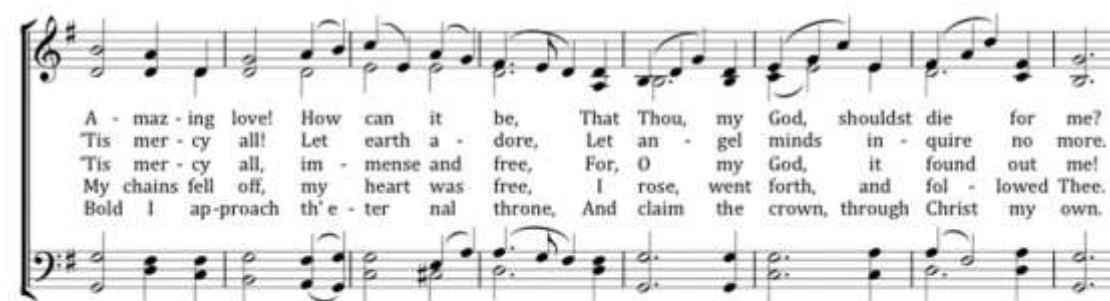


If you would like to support the ministry of Trinity Presbyterian Church, simply scan this QR code with the camera on your smartphone, and you will be redirected to our secure online giving Website. Or, visit our Website, [www.tpclouisville.net](http://www.tpclouisville.net) and click the “Give Now” box at the top of the page.

Thank you for giving in faith and for investing in the Lord’s on-going ministry of changing lives for the glory of God.

## And Can It Be?

God commendeth his love toward us, in that, while we were yet sinners, Christ died for us. Rom. 5:8



WORDS: Charles Wesley, pub. 1738. MUSIC: "Sagins"; Thomas Campbell, pub. 1825. Public Domain.

## TRINITY PRESBYTERIAN PRESCHOOL FUNDRAISER

The preschool is having a raffle fundraiser to raise money for classroom instructional materials and activities. We will be selling raffle tickets for a 6-quart, 9-in-1 Duo Plus Instant Pot. The tickets are \$2.00 each or \$5.00 for 3 tickets. The drawing will be held on Monday, March 28, and the winner will



be notified by phone or email. Information about the fundraiser is located on the table in the Narthex. Please put money for tickets in the attached envelope and leave in the preschool mailbox in the mail room.

Thank you for your support of the preschool program.

## *TPW CIRCLE MEETING*

The Trinity Presbyterian Women's Circle will gather for a meeting and a study of the Women of the Bible this Tuesday, March 8, in the parlor. Bring your lunch for fellowship time following. Come join us!!



## OPPORTUNITIES for the WEEK

SUNDAY (03/06)	11:00 a.m. 11:00 a.m. 5:00 p.m.	In-person Worship LiveStream Worship Small Group Study
MONDAY (03/07)	7:00 p.m.	Dartball Away vs. SMBC St. Matthews Baptist Church
TUESDAY (03/08)	9:00–5:00 p.m. 10:30 a.m.	Autism Pottery Classes TPW Circle
WEDNESDAY (03/09)	9:30 – 11:30 a.m. 10:00 a.m.–1:00 p.m. 1:00 p.m. – 3:00 p.m. 6:00 p.m. 7:00 p.m.	Sew 'n Sews F&A Open Studio Private pottery classes Adult Handbells Practice Adult Choir Rehearsal
SUNDAY (03/13)	11:00 a.m. 11:00 a.m. 5:00 p.m.	In-person Worship LiveStream Worship Small Group Study



## Match Results

**Record: 33–21**

Monday, February 28, 2022  
vs. St. Matthews Methodist Church  
Game 1: W 6–2 on 9 hits  
Game 2: W 4–3 on 8 hits  
Game 3: W 4–2 on 7 hits

Next Match: Away Monday 03/07/2022 @ 7:00 pm  
vs. .St. Matthews Baptist Church



## Mission Committee News ....

### *Operation Christmas Child Shoeboxes*



This year the goal of our Operation Christmas Child campaign will be to pack and ship 550 shoeboxes! Think about it....each box represents a child and his or her family. If we reach our goal, 550 children and families around the world will be impacted by the expression of God's love as a shoebox gift and by learning about His Son, Jesus Christ. So, beginning today and for the next month, we will have a collection box placed in the Narthex for donations of children's **underwear, socks, and flip-flops**.

It has been called to our attention that most of our shoeboxes are sent to countries in warm climates (South America, South Africa), so we are concentrating on warm-weather clothing and accessories.

Our timetable for collecting items to pack in the shoeboxes has been ramped up a bit this year; we are planning a packing party in July and August! So, we need any donations to be brought in early so we know what we have and what we might still need to find.

Thank you for your help. If everyone helps out, we will have enough supplies to reach our goal!

## Mission Committee News ....

### *Operation Christmas Child Shoeboxes*



This year the goal of our Operation Christmas Child campaign will be to pack and ship 550 shoeboxes! Think about it....each box represents a child and his or her family. If we reach our goal, 550 children and families around the world will be impacted by the expression of God's love as a shoebox gift and by learning about His Son, Jesus Christ. So, beginning today and for the next month, we will have a collection box placed in the Narthex for donations of children's **underwear, socks, and flip-flops**.

It has been called to our attention that most of our shoeboxes are sent to countries in warm climates (South America, South Africa), so we are concentrating on warm-weather clothing and accessories.

Our timetable for collecting items to pack in the shoeboxes has been ramped up a bit this year; we are planning a packing party in July and August! So, we need any donations to be brought in early so we know what we have and what we might still need to find.

Thank you for your help. If everyone helps out, we will have enough supplies to reach our goal!